



Thaw and Culture Details

Cell Line Name	JHU143i
WiCell Lot Number	DB41347
Provider	Johns Hopkins University – Laboratory of Dr. Lewis Becker
Banked By	Johns Hopkins University – Laboratory of Dr. Lewis Becker
Thaw and Culture Recommendations	WiCell recommends thawing 1 vial into 3 wells of a 6 well plate. WiCell recommends thawing using ROCK Inhibitor for best results.
Culture Platform	Feeder Independent
	Medium: E8
	Matrix: Vitronectin
Protocol	WiCell Feeder Independent E8 Medium Protocol
Passage Number	p6 These cells were cultured for 6 passages post reprogramming prior to freeze. Add +1 to the passage number to best represent the overall passage number of the cells at thaw.
Date Viald	08-June-2016
Vial Label	P143 P6 1X10 ⁶ 6/8/16
Biosafety and Use Information	This cell line is of human origin. Appropriate biosafety precautions should be followed when working with these cells. The end user is responsible for ensuring that the cells are handled and stored in an appropriate manner. WiCell is not responsible for damages or injuries that may result from the use of these cells. Cells distributed by WiCell are intended for research purposes only and are not intended for use in humans.

Testing Performed by WiCell

Test Description	Test Provider	Test Method	Test Specification	Result
Karyotype by G-banding	WiCell	SOP-CH-003	Expected karyotype	See Report
	Results: 46,XX,t(6;7)(q13;p22)[2]/46,XX[18] Interpretation: This is an abnormal karyotype. An apparently balanced translocation between the long (q) arm of chromosome 6 and the short (p) arm of chromosome 7 is present in two of twenty cells examined. No other clonal abnormalities were detected at the stated band level of resolution.			
Post-Thaw Viable Cell Recovery	WiCell	SOP-CH-305	Recoverable attachment after passage	Pass
Identity by STR	UW Translational Research Initiatives in Pathology Laboratory	PowerPlex 16 HS System by Promega	Defines profile	Pass
Sterility	Steris	ST/07	Negative	Pass
Mycoplasma	WiCell	SOP-CH-044	Negative	Pass

Testing Reported by Provider

The Provider stated that some or all of the additional analyses listed below may have been performed for this cell line. For more information, publication and dbGaP links, where available, are provided on the cell line specific web page on the WiCell website.

- Embryoid bodies
- Infinium® Expanded Multi-Ethnic Genotyping Array (MEGA^{EX})



Approval Date	Quality Assurance Approval
25-August-2016	<div style="text-align: right; font-size: small;">8/15/2019</div> <div style="border: 1px solid black; padding: 2px; display: inline-block; margin-bottom: 5px;">X JKG</div> <div style="font-size: x-small; margin-top: 2px;">JKG Quality Assurance Signed by: Gay, Jenna</div>



Chromosome Analysis Report: 077564

Date Reported: Monday, July 22, 2019

Cell Line: JHU143i-DB41347 14897

Passage#: 7

Date of Sample: 7/15/2019

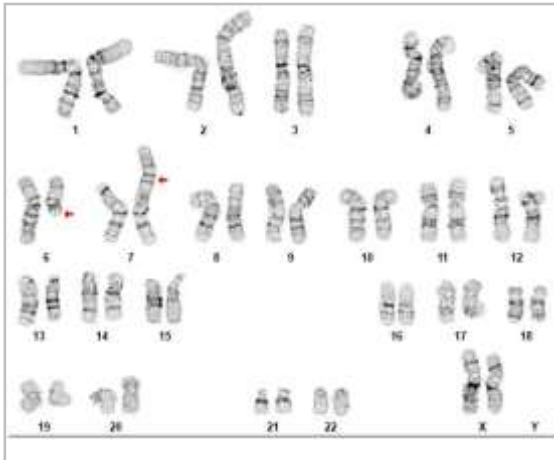
Specimen: Human IPS

Results: 46,XX,t(6;7)(q13;p22)[2]/46,XX[18]

Cell Line Sex: Female

Reason for Testing: lot release testing

Investigator: [REDACTED], WiCell



Cell: 28

Slide: G01

Slide Type: Karyotype

Total Counted: 20

Total Analyzed: 8

Total Karyogrammed: 5

Band Resolution: 425 - 525

Interpretation:

This is an abnormal karyotype. An apparently balanced translocation between the long (q) arm of chromosome 6 and the short (p) arm of chromosome 7 is present in two of twenty cells examined. No other clonal abnormalities were detected at the stated band level of resolution.

Completed by: [REDACTED] CG(ASCP)

Reviewed and Interpreted by: [REDACTED], PhD, FACMG

Date: _____ **Sent By:** _____ **Sent To:** _____ **QC Review By:** _____

Limitations: This assay allows for microscopic visualization of numerical and structural chromosome abnormalities. The size of structural abnormality that can be detected is >3-10Mb, dependent upon the G-band resolution obtained from this specimen. For the purposes of this report, band level is defined as the number of G-bands per haploid genome. It is documented here as "band level", i.e., the range of bands determined from the four karyograms in this assay. Detection of heterogeneity of clonal cell populations in this specimen (i.e., mosaicism) is limited by the number of metaphase cells examined, documented here as "# of cells counted".

This assay was conducted solely for listed investigator/institution. The results of this assay are for research use only. Unless otherwise mutually agreed in writing, the services provided to you hereunder by WiCell Research Institute, Inc. ("WiCell") are governed solely by WiCell's Terms and Conditions of Service, found at www.wicell.org/privacyandterms. Any terms you may attach to a purchase order or other document that are inconsistent, add to, or conflict with WiCell's Terms and Conditions of Service are null and void and of no legal force or effect.



HISTOLOGY - IHC - MOLECULAR - IMAGING

Department of Pathology and Laboratory Medicine
TRIP Laboratory (Molecular)
<https://research.pathology.wisc.edu/trip-home/>
(608) 265-9168

Short Tandem Repeat Analysis



Your Lab Partner

characterization@wicell.org
(608) 316-4145

Sample Report:

14897-STR

Sample Name on Tube: 14897-STR

56.9 ng/μL, (A260/280=2.17)

Sample Type: Cells

Cell Count: ~2 million cells

Requestor:

WiCell Research Institute

Quality Assurance Department

Receive Date: 07/29/19

Report Sent: 08/04/19

Assay Date: 07/30/19

File Name: STR 190731 wmr

Report Date: 08/01/19

STR Locus	STR Genotype Repeat #	STR Genotype
FGA	16-18,18.2,19,19.2,20,20.2,21,21.2,22, 22.2, 23, 23.2, 24, 24.2, 25, 25.2, 26-30, 31.2, 43.2, 44.2,45.2, 46.2	Identifying information has been redacted to protect donor confidentiality. If more information is required, please, contact WiCell's Technical Support .
TPOX	6-13	
D8S1179	7-18	
vWA	10-22	
Amelogenin	X,Y	
Penta_D	2.2, 3.2, 5, 7-17	
CSF1PO	6-15	
D16S539	5, 8-15	
D7S820	6-14	
D13S317	7-15	
D5S818	7-16	
Penta_E	5-24	
D18S51	8-10, 10.2, 11-13, 13.2, 14-27	
D21S11	24,24.2,25,25.2,26-28,28.2,29,29.2, 30, 30.2,31, 31.2,32,32.2,33,33.2, 34,34.2,35,35.2,36-38	
TH01	4-9,9.3,10-11,13.3	
D3S1358	12-20	

Results: Based on the 14897-STR cells submitted by WiCell QA dated and received on 07/29/19, this sample (Label on Tube: 14897-STR) defines the STR profile of the human cell line JHU143i comprising 29 allelic polymorphisms across the 15 STR loci analyzed.

Interpretation: No STR polymorphisms other than those corresponding to the human JHU143i cell line were detected and the concentration of DNA required to achieve an acceptable STR genotype (signal/ noise) was equivalent to that required for the standard procedure (~1 ng/amplification reaction) from human genomic DNA. This result suggests that the 14897-STR sample submitted corresponds to the JHU143i cell line and was not contaminated with any other human cells or a significant amount of mouse feeder layer cells.

Sensitivity: Sensitivity limits for detection of STR polymorphisms unique to either this or other human cell lines is ~2-5%.

X *RMB*

Digitally Signed on 08/04/19

██████████, BA
TRIP Laboratory, Molecular

X *WMR*

Digitally Signed on 08/04/19

██████████ PhD, Director / Co-Director
UWHC Molecular Diagnostics Laboratory / UWSMPH TRIP Laboratory

Testing was accomplished by analysis of human genetic polymorphisms at STR loci. This methodology has not yet been approved by the FDA and is for investigational use only.

Acknowledge TRIP in your publications, posters & presentations. For details, see: <https://research.pathology.wisc.edu/acknowledging-trip/>
Unless otherwise mutually agreed in writing, the services provided to you hereunder by WiCell Research Institute, Inc. ("WiCell") are governed solely by WiCell's Terms and Conditions of Service, found at <https://www.wicell.org/media.acux/ca76d97c-862a-43f3-b02a-ab2d1e619100>. Any terms you may attach to a purchase order or other document that are inconsistent, add to, or conflict with WiCell's Terms and Conditions of Service are null and void and of no legal force or effect.

Native Product Sterility Report



WiCell
504 S Rosa Road, Rm 101
Madison, WI 53719

SAMPLE #: 19071395
DATE RECEIVED: 18-Jul-19
TEST INITIATED: 24-Jul-19
TEST COMPLETED: 07-Aug-19

SAMPLE NAME / DESCRIPTION: STAN037i-118-1 DB30906 14904
JHU058i DB41092 14905
JHU172i DB36377 14906
JHU170i DB36371 14907
JHU225i DB41417 14908
JHU143i DB41347 14909
JHU104i DB41282 14910
JHU080i DB36222 14911
JHU097i DB41267 14912
STAN343i-998C1 DB35654 14913

UNIQUE IDENTIFIER: NA

TEST RESULTS:

# Tested	# Positives (Growth)	- Control
10	0	2 Negatives

TEST SUMMARY:

# Samples	Media Type	Volume (mL)	Incubation Temperature (° C)	Incubation Duration (Days)
10	TSB	40	20-25	14
10	FTG	40	30-35	14

REFERENCE: Processed according to LAB-003: Sterility Test Procedure

PD #: 000053

TEST METHODOLOGY: USP - Direct Transfer

COMMENTS: NA

REVIEWED BY 

DATE 07 Aug 19

Specific test results may not be indicative of the characteristics of any other samples from the same lot or similar lots. This test report shall not be reproduced, except in full, without prior written approval. Liability is limited to the costs of the tests. Results applied to samples as received.



Mycoplasma Assay Report

PCR-based assay performed by WiCell

WiCell Lot Release Testing

22Jul19

FORM SOP-CH-044.03

Version B Edition 02

#	Sample Name	Result	Comments/Suggestions
1	JHU143i-DB41347 14897	Negative	Band was not seen at 270bp, indicating the absence of mycoplasma
2	Positive (+) Control	Positive	
3	Negative (-) Control	Negative	

Reported by: Anna Lisa Larson, Senior Research Specialist

Reviewed by: Katie Remondini, Cell Culture Specialist

Unless otherwise mutually agreed in writing, the services provided to you hereunder by WiCell Research Institute, Inc. ("WiCell") are governed solely by WiCell's Terms and Conditions of Service, found at www.wicell.org/privacyandterms. Any terms you may attach to a purchase order or other document that are inconsistent, add to, or conflict with WiCell's Terms and Conditions of Service are null and void and of no legal force or effect.

A gel image is available upon request.